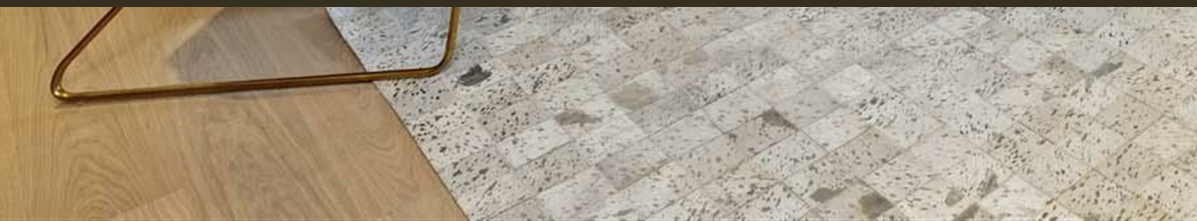




Ebury Apartments, Pimlico
London SW1V

GARTONJONES.COM



Ebury Apartments, Pimlico London, SW1V

£850 Per Week

A TWO DOUBLE BEDROOM apartment to rent of approx. 816 sq.ft (75.8 sq.m) in this small residential development in Pimlico. This beautifully FURNISHED apartment benefits from an open plan reception room with access to a LARGE PRIVATE BALCONY, there is a kitchen with Siemens integrated appliances (including a wine cooler and induction hob), 2 luxury bathrooms (1 en-suite), wood flooring, comfort cooling, good storage including fitted wardrobes to the master bedroom and a utility cupboard housing a washer dryer.

24 HOUR CONCIERGE. Cycle storage. Belgravia and Elizabeth Street, Knightsbridge, and Sloane Square are within easy access and Victoria Station with Gatwick Express are just a few minutes' walk. Hot water is also included. Parking available by separate negotiation.

Available via Garton Jones Chelsea & Belgravia (approx. a 5 minute walk).

Please note the furniture may differ or not be included to that shown in current photos.

Unfortunately pets are not permitted at this development.

Westminster City Council (band G). Total: £1,520.09 per annum 2023/2024.

12 month minimum term. 5 week deposit required.

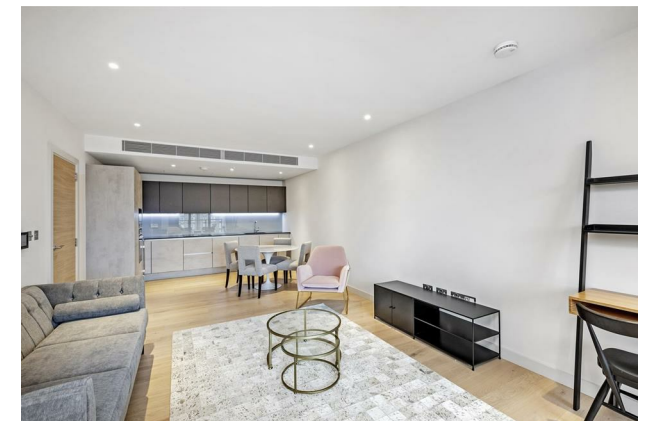
EPC certificate available on request.

GARTON JONES.COM

8 Gatliff Road
Grosvenor
Waterside
Chelsea
London
SW1W 8DP

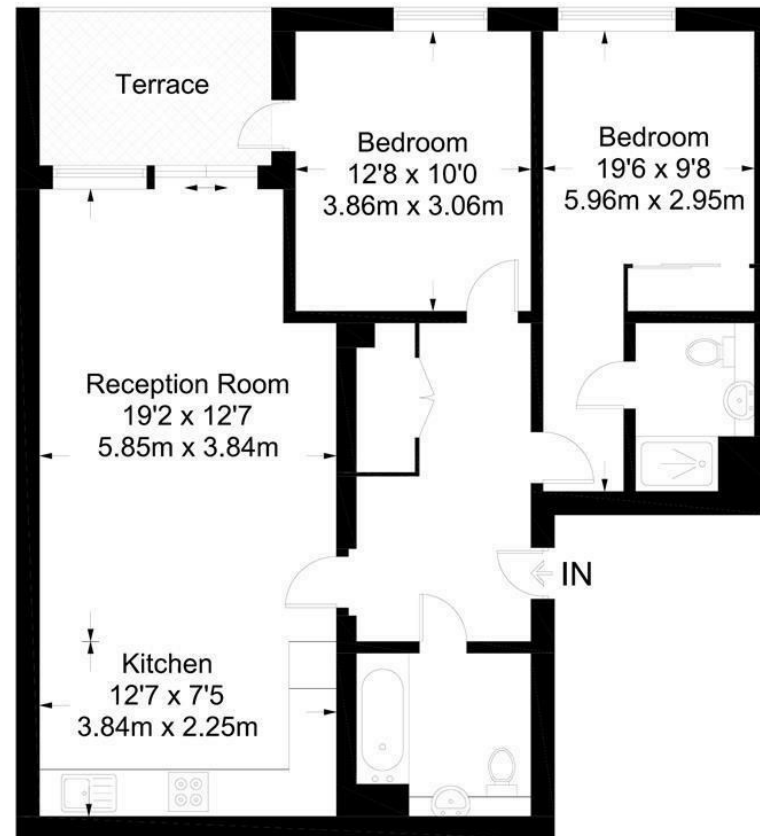
Sales +44 (0) 20 7730 5007
gws@gartonjones.com
www.gartonjones.com

- 816 Sq.ft (75.8 Sq.m)
- 2 Double Bedrooms
- Open Plan Reception Room
- Integrated Kitchen
- 2 Luxury Bathrooms (1 En-Suite)
- 24 Hour Concierge
- Large Private Balcony
- Cycle Storage
- Close to Belgravia, Elizabeth Street, Knightsbridge & Sloane Square
- Within Walking Distance of Sloane Square & Victoria Mainline Station



Ebury Apartments

Approximate Gross Internal Area = 816 sq ft / 75.8 sq m



Not to scale, for guidance only and must not be relied upon as a statement of fact.
All measurements and areas are approximate only and have been prepared in
accordance with the current edition of the RICS Code of Measuring Practice.

